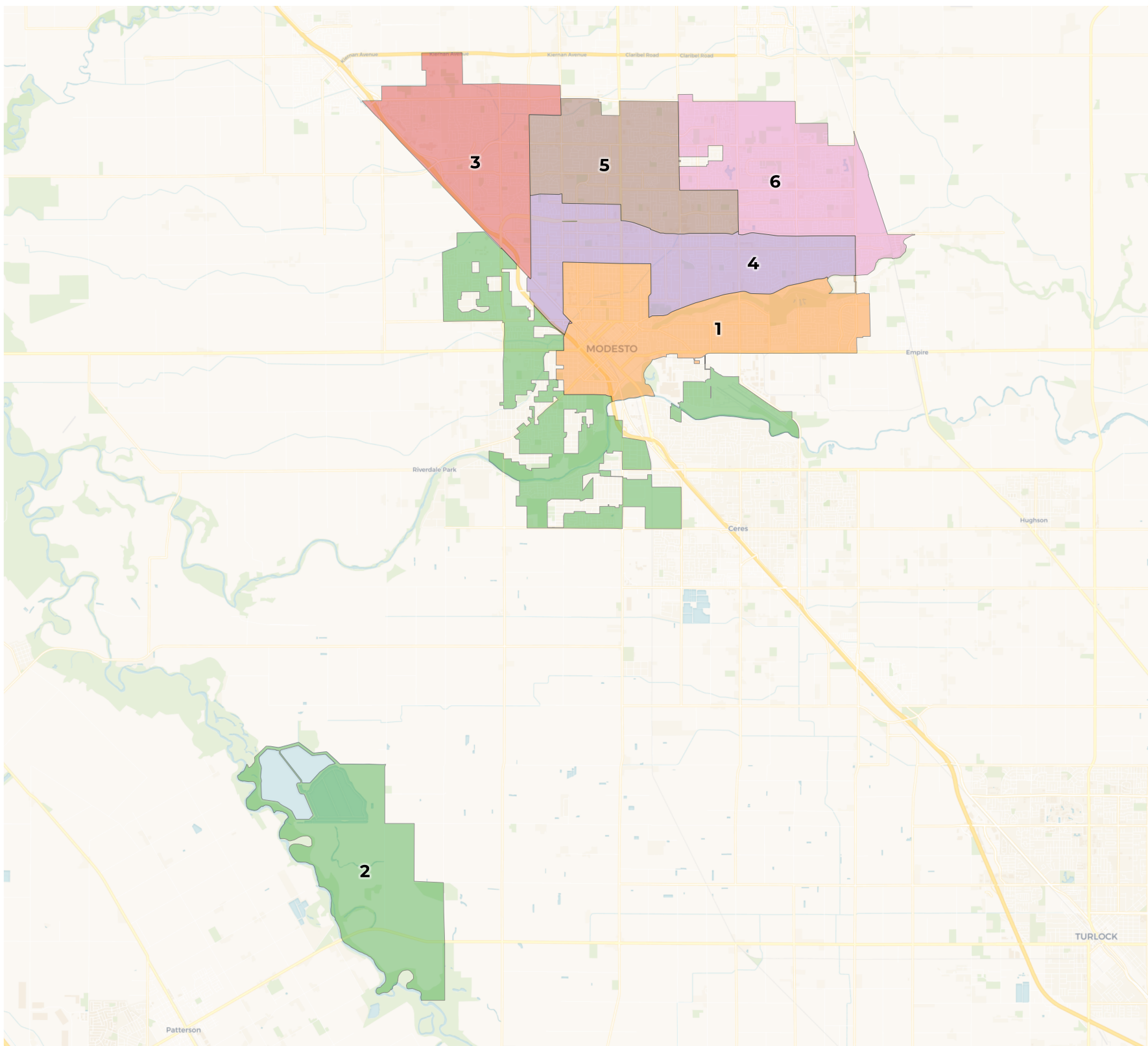




**REDISTRICTING
PARTNERS**

City of Modesto-Community Map

Historic Neighborhoods-999990



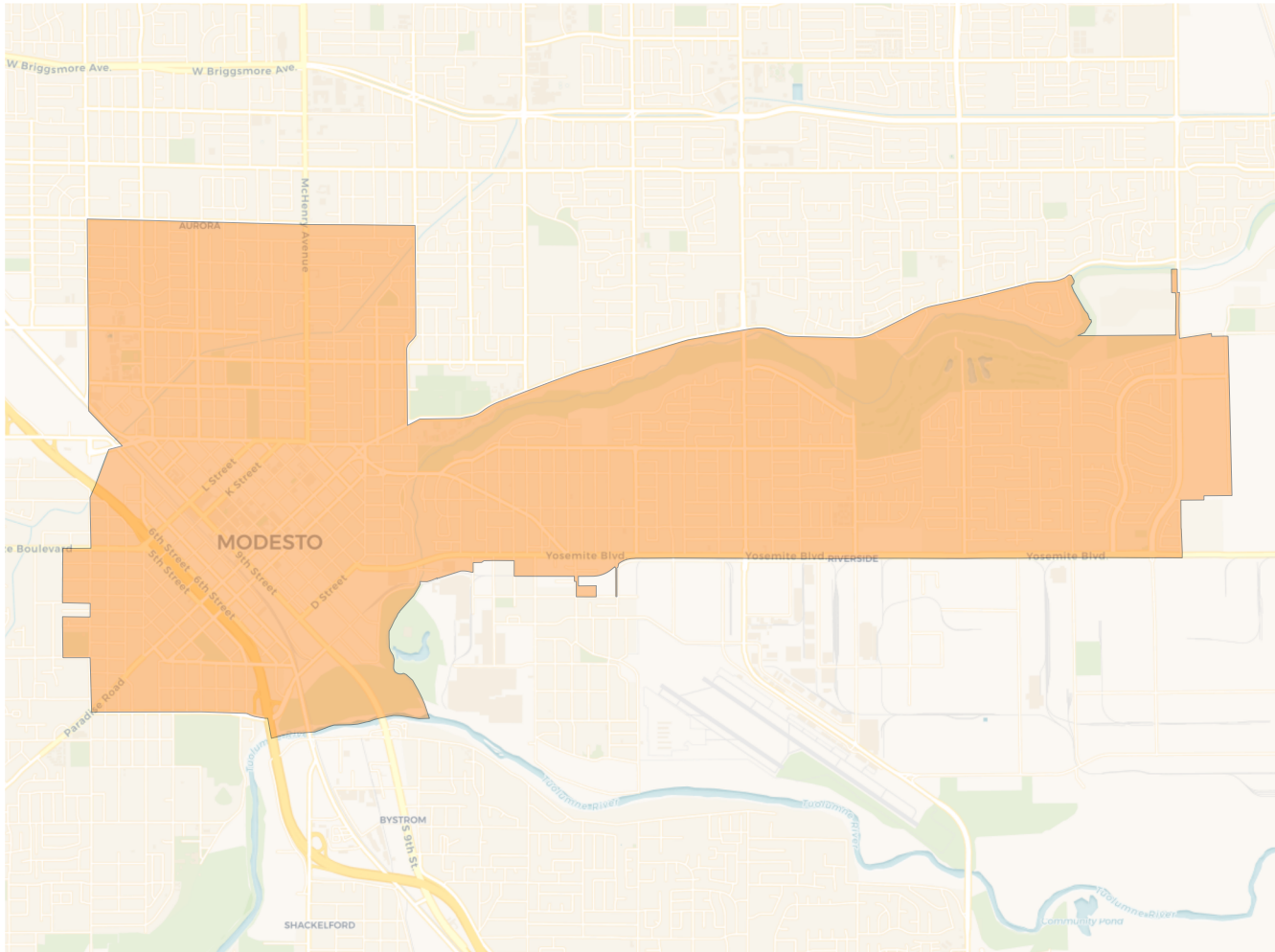
2020 Census

	1	2	3	4	5	6
Population	37,656	36,791	34,386	37,147	36,639	36,632
Deviation	1,114	249	-2,156	605	97	90
Deviation %	3.0%	0.7%	-5.9%	1.7%	0.3%	0.2%
Other	17,175	7,158	15,623	20,931	19,939	19,206
Other %	45.6%	19.5%	45.4%	56.3%	54.4%	52.4%
Latino	17,249	26,144	13,211	13,122	12,900	11,419
Latino %	45.8%	71.1%	38.4%	35.3%	35.2%	31.2%
Asian	1,715	2,444	4,084	1,815	2,346	4,532
Asian %	4.6%	6.6%	11.9%	4.9%	6.4%	12.4%
Black	1,517	1,045	1,468	1,279	1,454	1,475
Black %	4.0%	2.8%	4.3%	3.4%	4.0%	4.0%

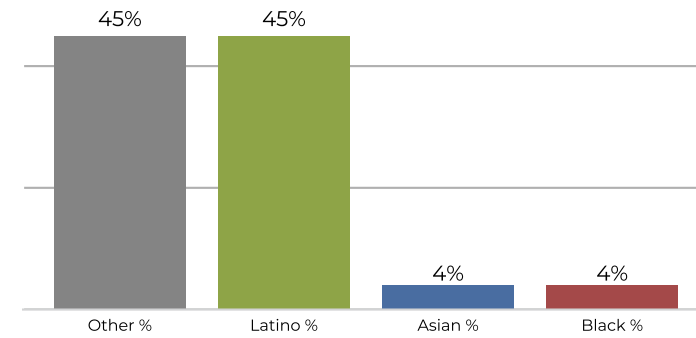
Citizen Voting Age Population (CVAP)

	1	2	3	4	5	6
Total CVAP	22,786	19,376	23,700	25,264	25,338	23,860
Other CVAP	13,826	5,962	13,032	16,968	15,931	14,631
Other CVAP %	60.7%	30.8%	55.0%	67.2%	62.9%	61.3%
Latino CVAP	7,046	10,987	6,984	5,946	7,064	6,004
Latino CVAP %	30.9%	56.7%	29.5%	23.5%	27.9%	25.2%
Asian CVAP	829	1,470	2,355	1,364	1,288	2,216
Asian CVAP %	3.6%	7.6%	9.9%	5.4%	5.1%	9.3%
Black CVAP	1,085	957	1,329	986	1,055	1,009
Black CVAP %	4.8%	4.9%	5.6%	3.9%	4.2%	4.2%

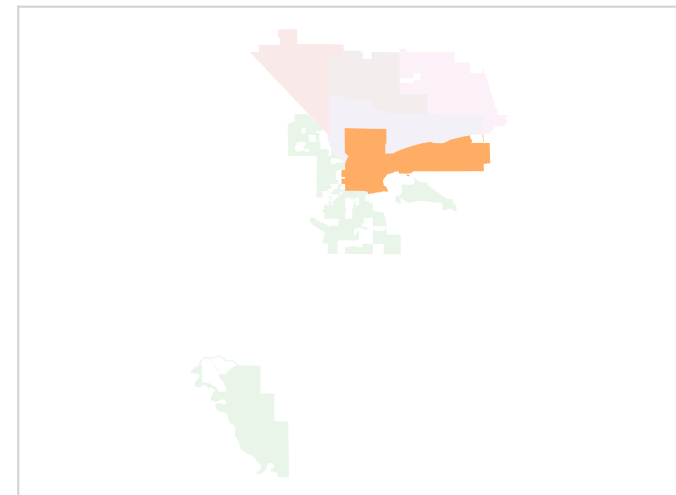
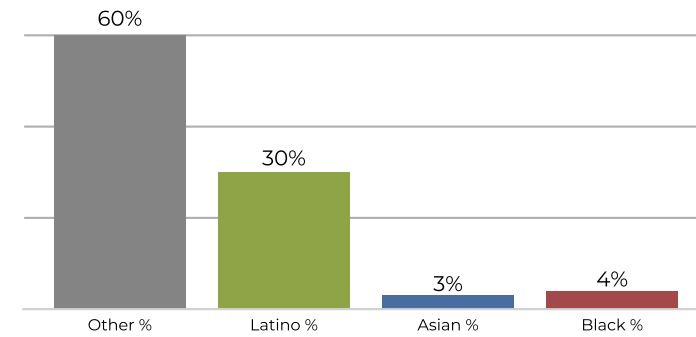
District 1



2020 Census

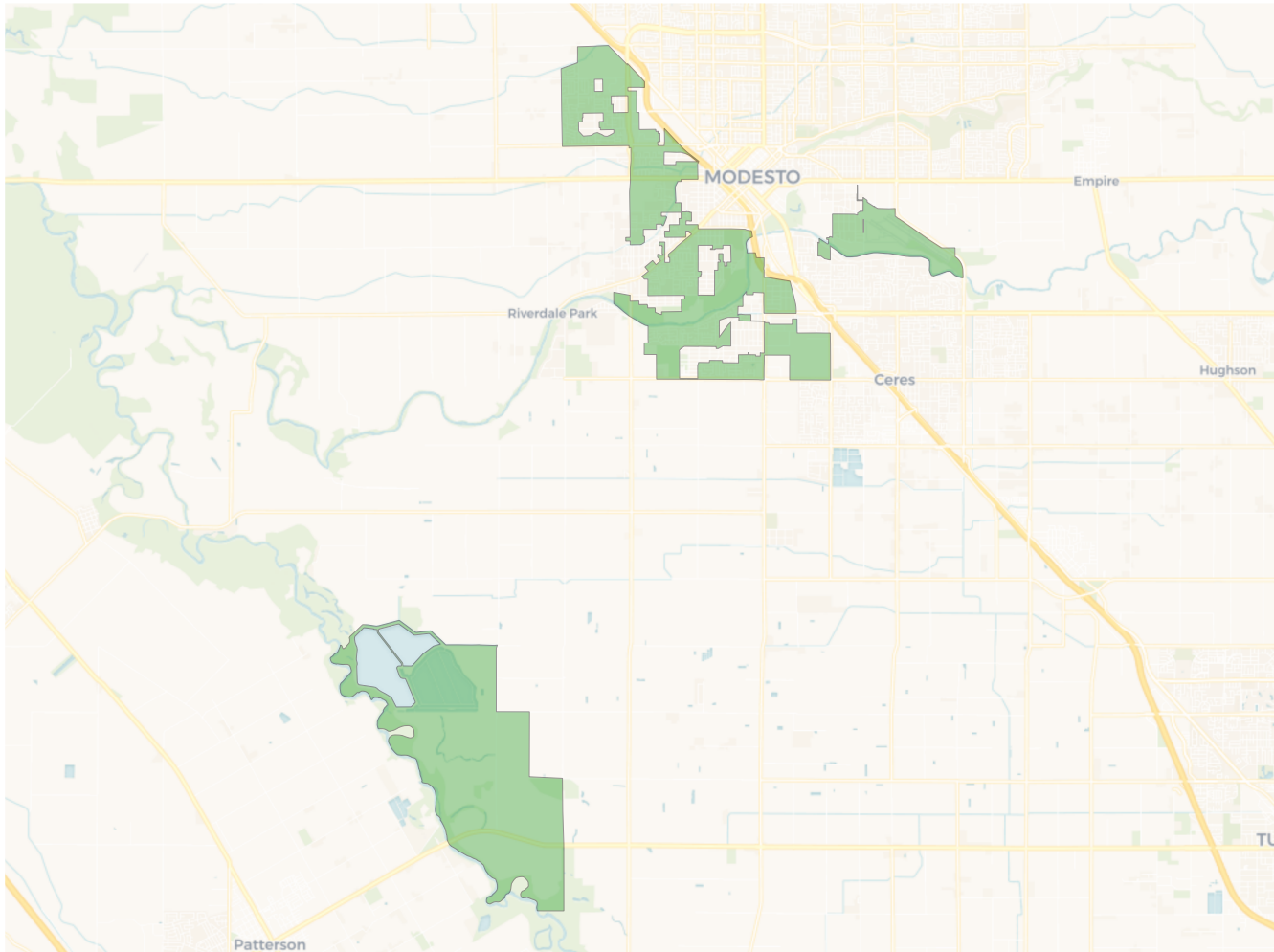


Citizen Voting Age Population

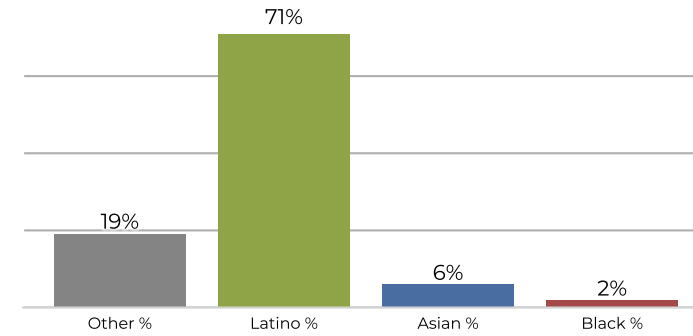


Population	Deviation	Deviation %	Other	Other %	Latino	Latino %	Asian	Asian %	Black	Black %
37,656	1,114	3.0%	17,175	45.6%	17,249	45.8%	1,715	4.6%	1,517	4.0%
Total CVAP	Other CVAP	Other CVAP %	Latino CVAP	Latino CVAP %	Asian CVAP	Asian CVAP %	Black CVAP	Black CVAP %		
22,786	13,826	60.7%	7,046	30.9%	829	3.6%	1,085	4.8%		

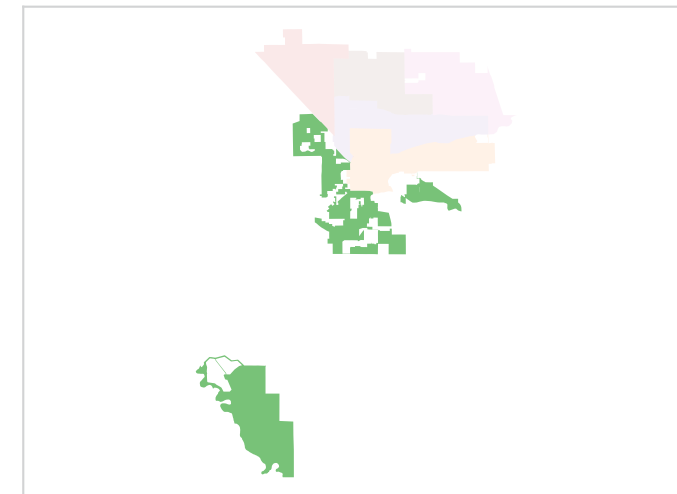
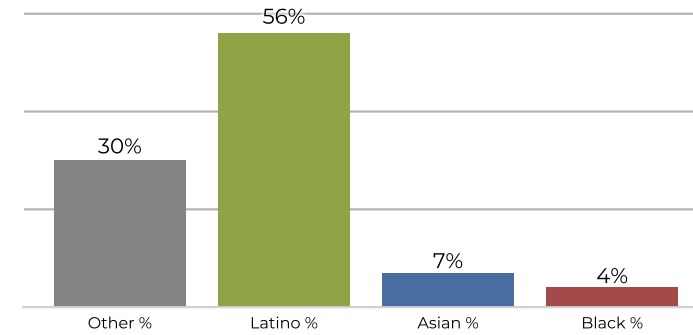
District 2



2020 Census

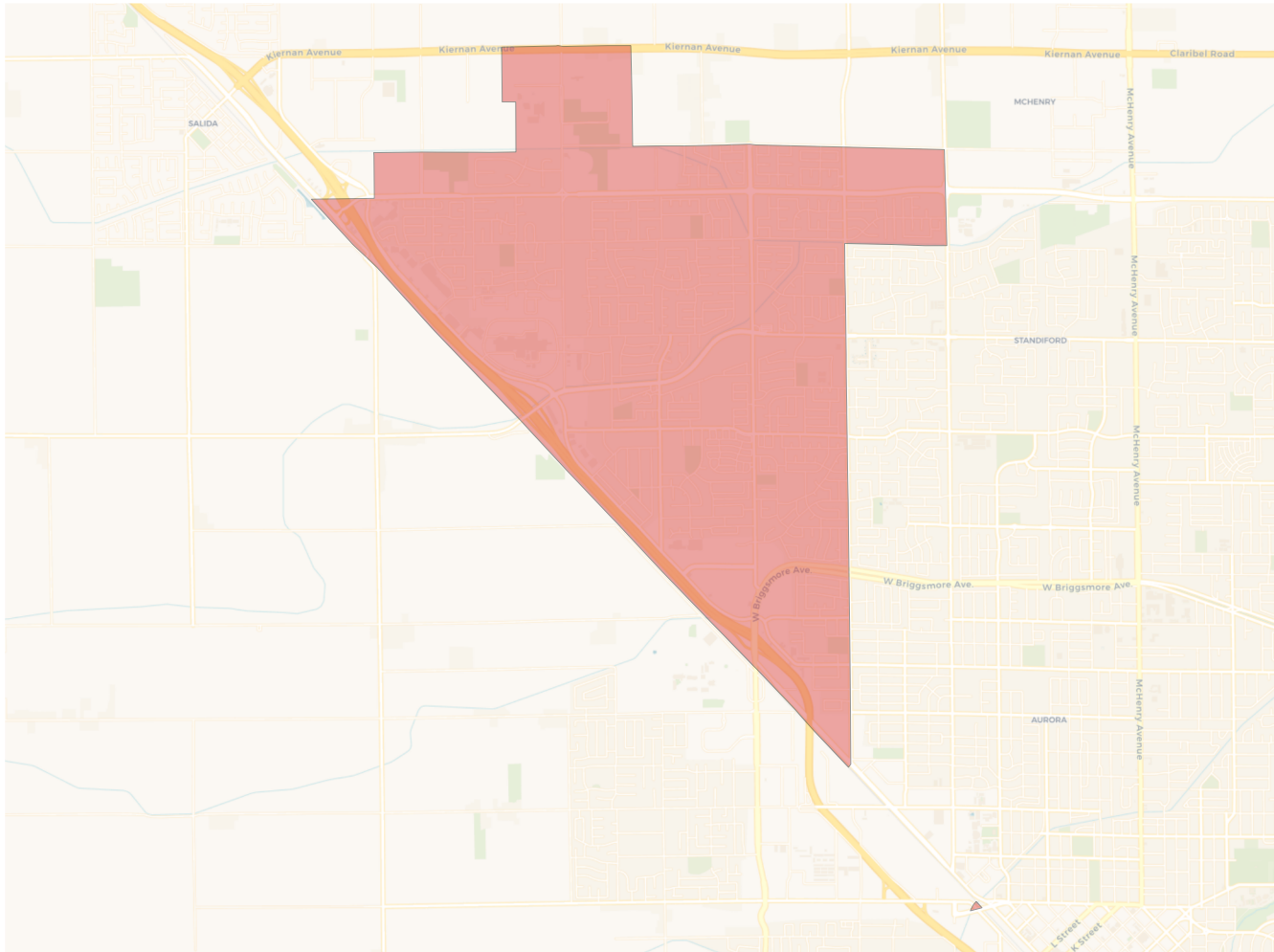


Citizen Voting Age Population

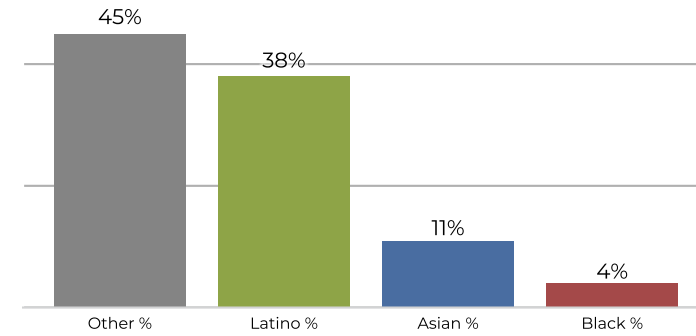


Population	Deviation	Deviation %	Other	Other %	Latino	Latino %	Asian	Asian %	Black	Black %
36,791	249	0.7%	7,158	19.5%	26,144	71.1%	2,444	6.6%	1,045	2.8%
Total CVAP	Other CVAP	Other CVAP %	Latino CVAP	Latino CVAP %	Asian CVAP	Asian CVAP %	Black CVAP	Black CVAP %		
19,376	5,962	30.8%	10,987	56.7%	1,470	7.6%	957	4.9%		

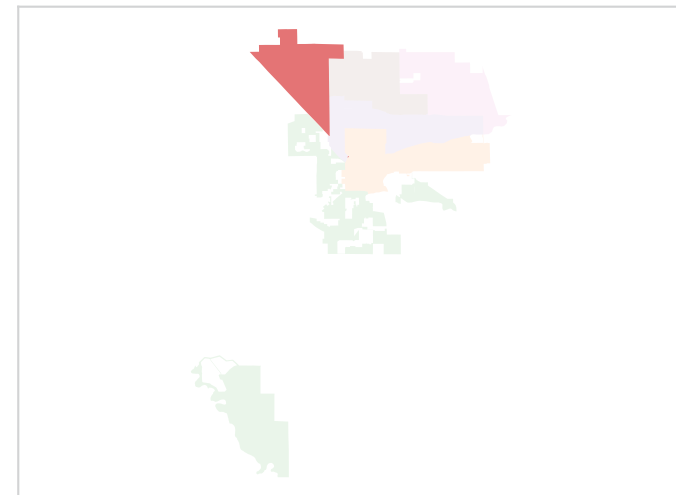
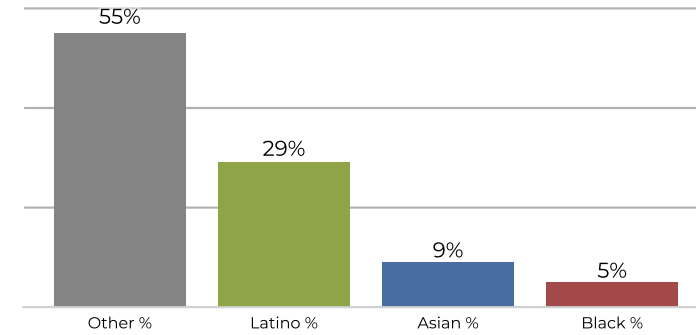
District 3



2020 Census

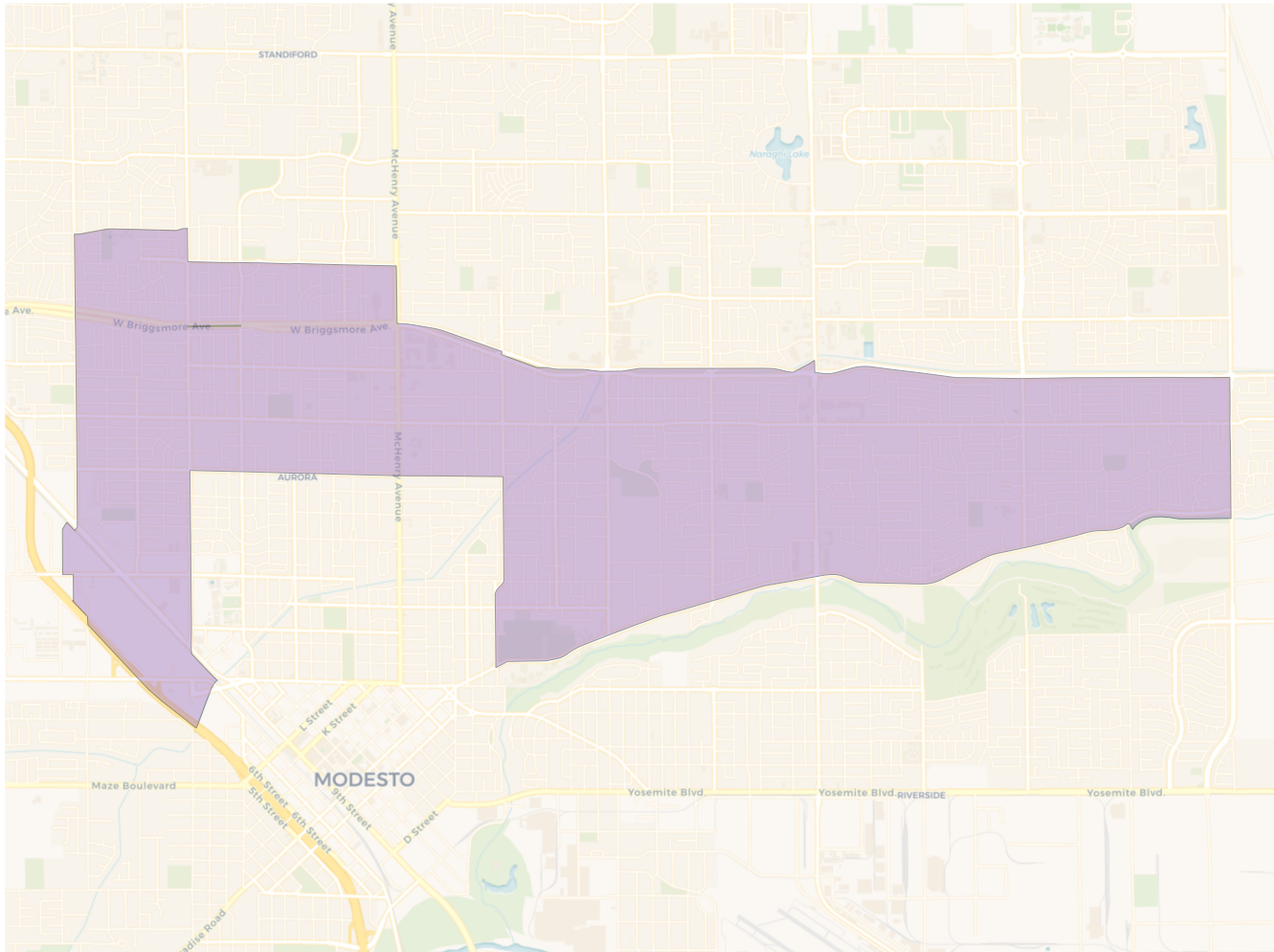


Citizen Voting Age Population

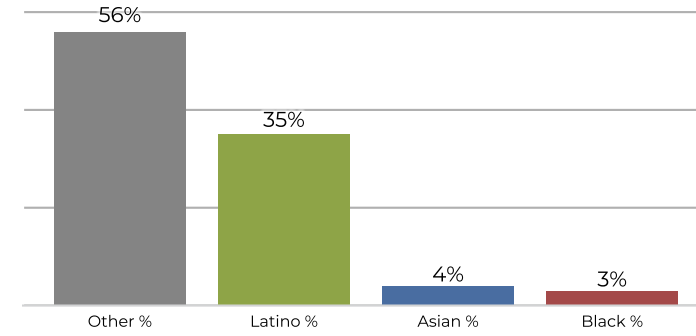


Population	Deviation	Deviation %	Other	Other %	Latino	Latino %	Asian	Asian %	Black	Black %
34,386	-2,156	-5.9%	15,623	45.4%	13,211	38.4%	4,084	11.9%	1,468	4.3%
Total CVAP	Other CVAP	Other CVAP %	Latino CVAP	Latino CVAP %	Asian CVAP	Asian CVAP %	Black CVAP	Black CVAP %		
23,700	13,032	55.0%	6,984	29.5%	2,355	9.9%	1,329	5.6%		

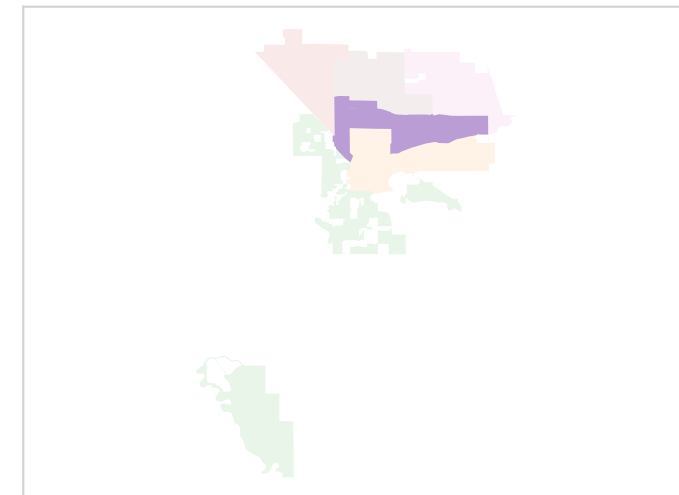
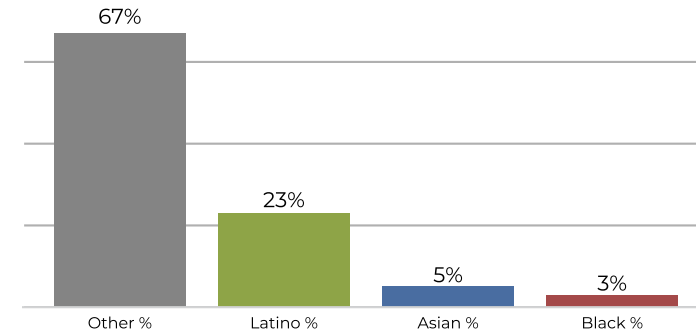
District 4



2020 Census

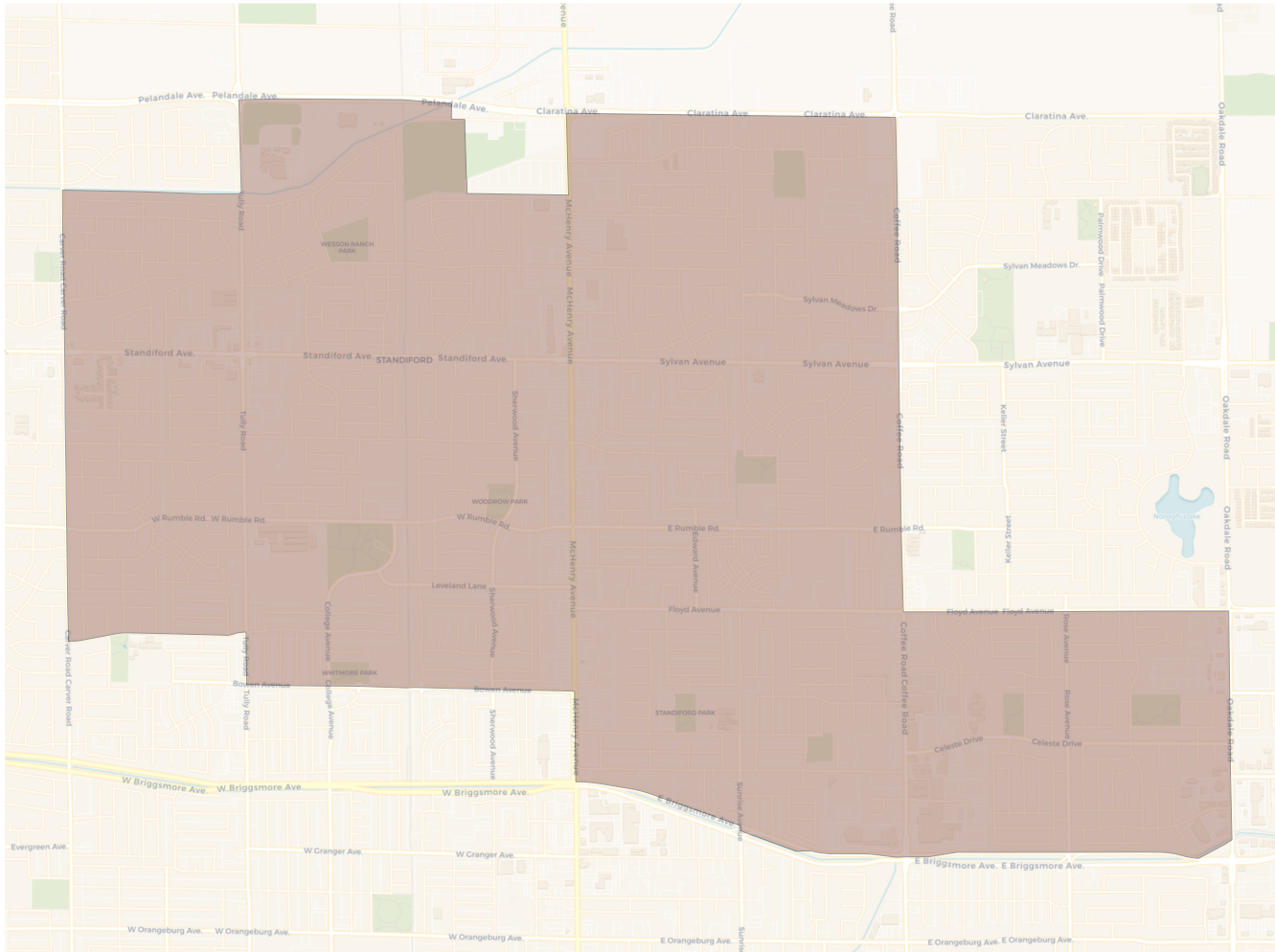


Citizen Voting Age Population

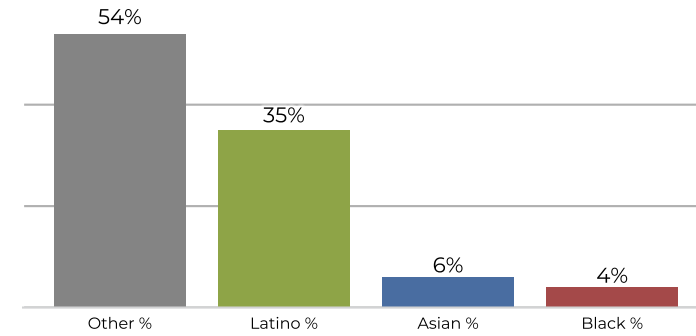


Population	Deviation	Deviation %	Other	Other %	Latino	Latino %	Asian	Asian %	Black	Black %
37,147	605	1.7%	20,931	56.3%	13,122	35.3%	1,815	4.9%	1,279	3.4%
Total CVAP	Other CVAP	Other CVAP %	Latino CVAP	Latino CVAP %	Asian CVAP	Asian CVAP %	Black CVAP	Black CVAP %		
25,264	16,968	67.2%	5,946	23.5%	1,364	5.4%	986	3.9%		

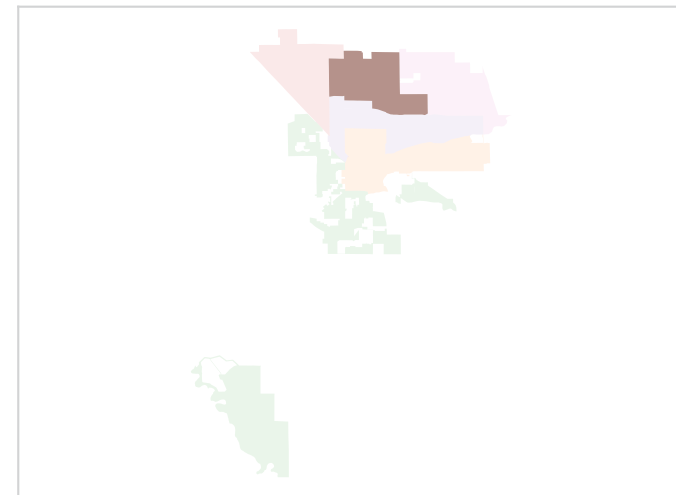
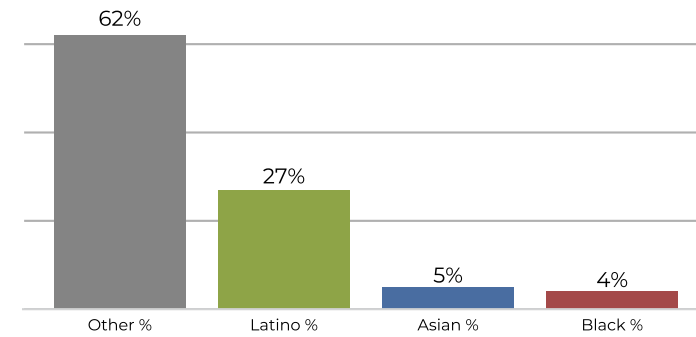
District 5



2020 Census

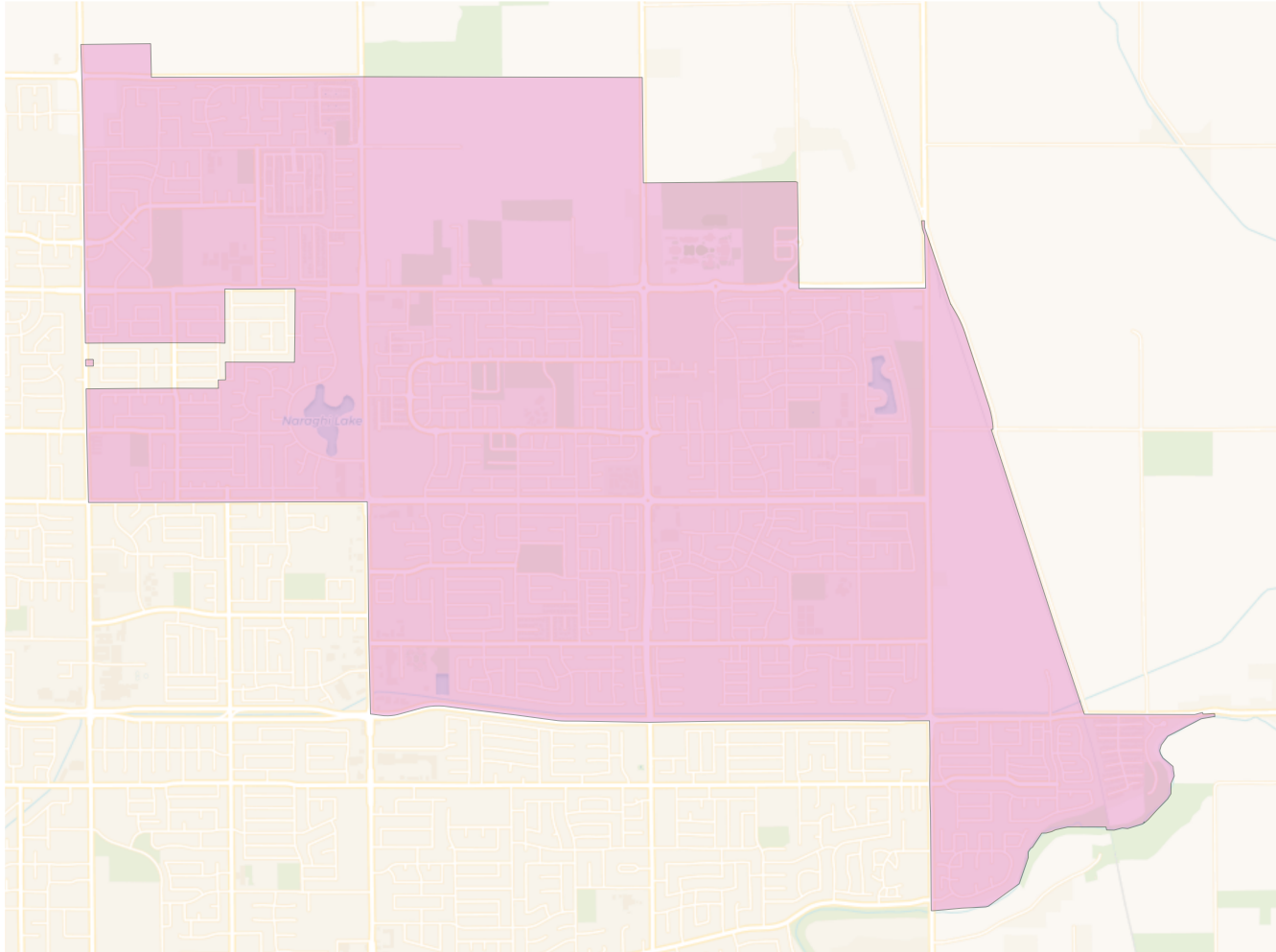


Citizen Voting Age Population

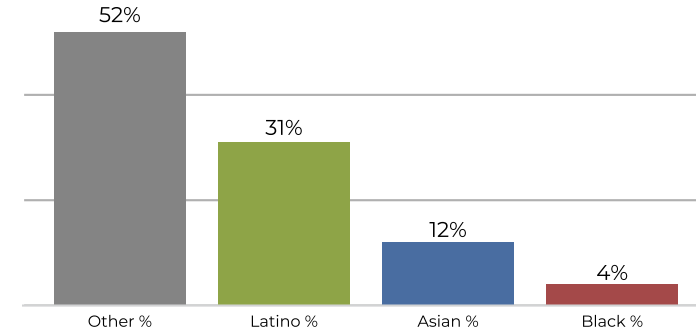


Population	Deviation	Deviation %	Other	Other %	Latino	Latino %	Asian	Asian %	Black	Black %
36,639	97	0.3%	19,939	54.4%	12,900	35.2%	2,346	6.4%	1,454	4.0%
Total CVAP	Other CVAP	Other CVAP %	Latino CVAP	Latino CVAP %	Asian CVAP	Asian CVAP %	Black CVAP	Black CVAP %		
25,338	15,931	62.9%	7,064	27.9%	1,288	5.1%	1,055	4.2%		

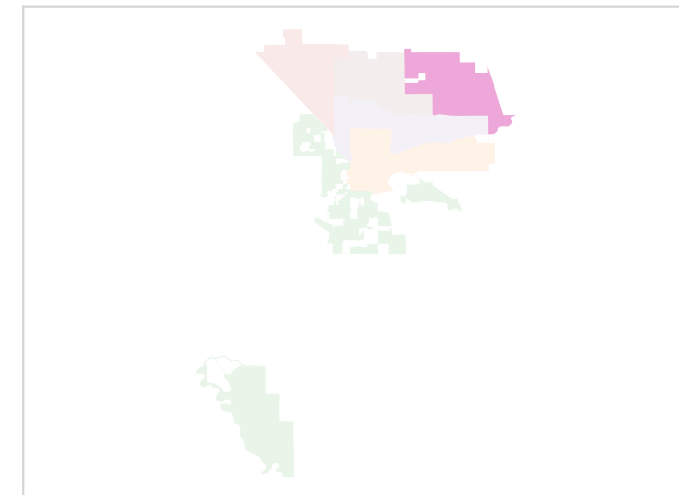
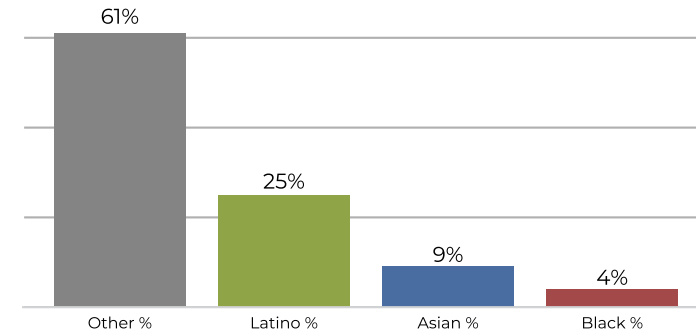
District 6



2020 Census



Citizen Voting Age Population



Population	Deviation	Deviation %	Other	Other %	Latino	Latino %	Asian	Asian %	Black	Black %
36,632	90	0.2%	19,206	52.4%	11,419	31.2%	4,532	12.4%	1,475	4.0%
Total CVAP	Other CVAP	Other CVAP %	Latino CVAP	Latino CVAP %	Asian CVAP	Asian CVAP %	Black CVAP	Black CVAP %		
23,860	14,631	61.3%	6,004	25.2%	2,216	9.3%	1,009	4.2%		