

PROPOSED BOUNDARIES AND FUTURE ANNEXATION AREA OF
CITY OF MODESTO COMMUNITY FACILITIES DISTRICT NO. 2025-2
(VILLAGE ONE TRIANGLE)
CITY OF MODESTO, COUNTY OF STANISLAUS, STATE OF CALIFORNIA



SIEGFRIED

- CIVIL ENGINEERING
- STRUCTURAL ENGINEERING
- SURVEYING
- PLANNING

3428 Brookside Road, Stockton, California 95219
209-943-2021 www.siegfriedeng.com Fx: 209-942-0214

COUNTY RECORDER'S STATEMENT:

FILED THIS _____ DAY OF _____, 2025, AT THE HOUR OF _____ O'CLOCK ____ M
IN BOOK _____ OF MAPS OF ASSESSMENT AND COMMUNITY FACILITIES DISTRICTS AT PAGE(S)
_____ IN THE OFFICE OF THE COUNTY RECORDER OF THE COUNTY OF STANISLAUS, STATE OF
CALIFORNIA.

_____, COUNTY RECORDER OF THE COUNTY OF STANISLAUS, STATE OF CALIFORNIA

BY: _____, DEPUTY _____
PRINT NAME

CITY CLERK'S STATEMENTS:

FILED IN THE OFFICE OF THE CITY CLERK OF THE CITY OF MODESTO SHOWING THIS _____ DAY OF _____, 2025.

DIANE NAYARES-PEREZ, CITY CLERK

BY: _____

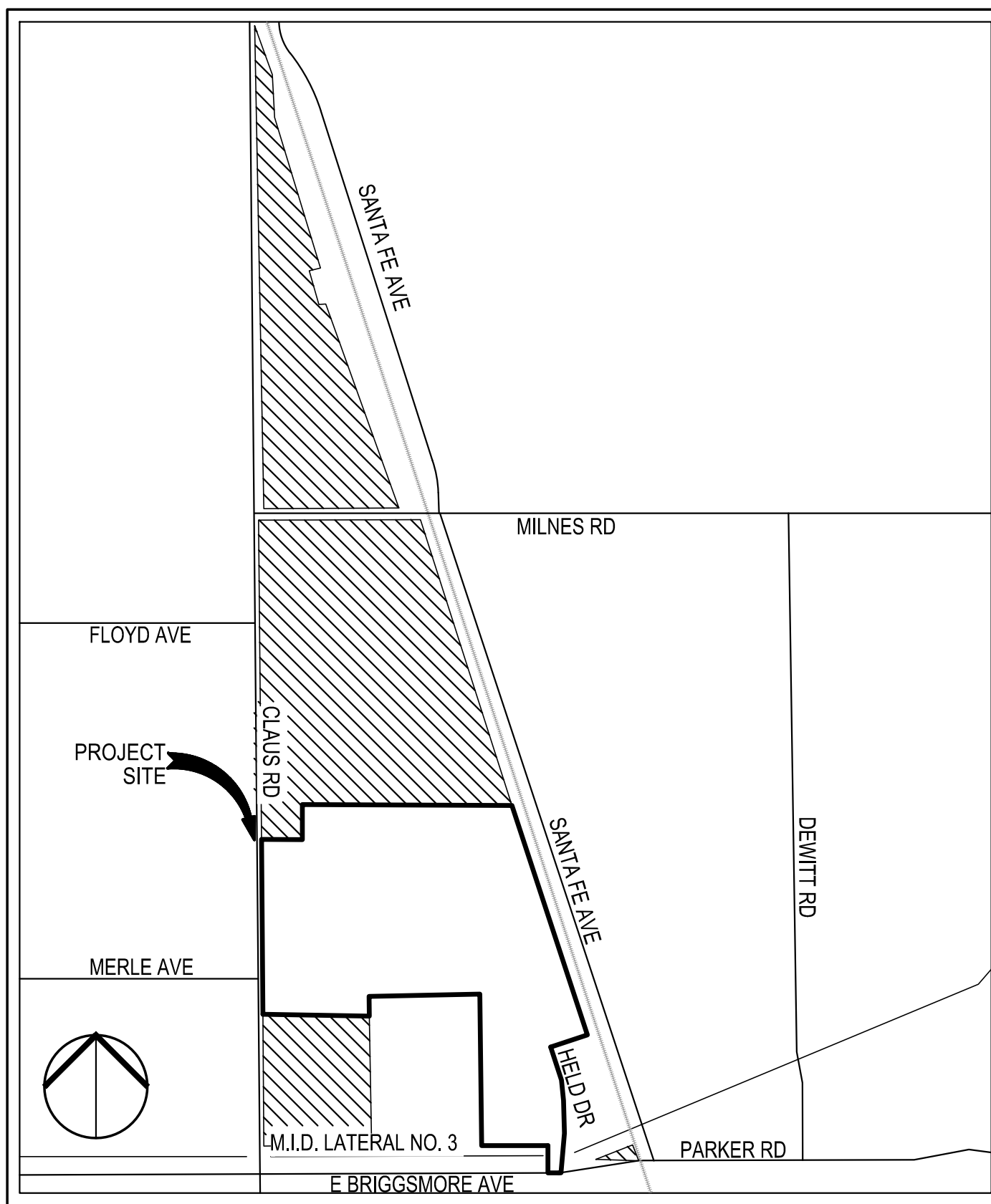
PRINT NAME

I HEREBY CERTIFY THAT THIS MAP SHOWING THE PROPOSED BOUNDARIES AND FUTURE ANNEXATION AREA OF CITY OF MODESTO COMMUNITY FACILITIES DISTRICT NO. 2025-2 (VILLAGE ONE TRIANGLE), CITY OF MODESTO, COUNTY OF STANISLAUS, STATE OF CALIFORNIA, WAS APPROVED BY THE CITY COUNCIL OF THE CITY OF MODESTO AT A REGULAR MEETING THEREOF, HELD ON THE _____ DAY OF _____, 2025, BY ITS RESOLUTION NO. _____.

DIANE NAYARES-PEREZ, CITY CLERK


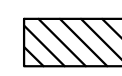
BY: _____

PRINT NAME



VICINITY MAP
NOT TO SCALE

LEGEND:

-  BOUNDARY OF COMMUNITY FACILITIES DISTRICT NO. 2025-2
-  FUTURE ANNEXATION AREA OF COMMUNITY FACILITIES DISTRICT NO. 2025-2

