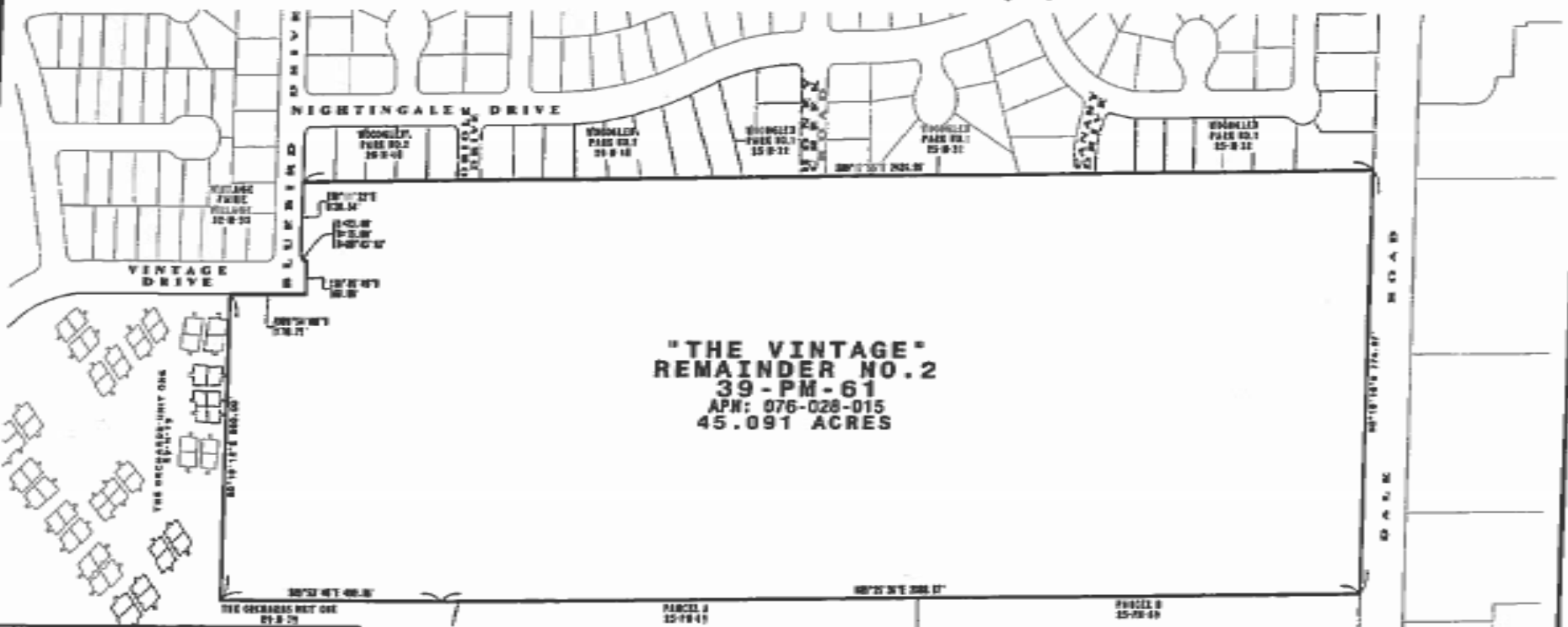


PROPOSED BOUNDARIES OF CITY OF MODESTO COMMUNITY FACILITIES DISTRICT NO. 2016-2 (THE VINTAGE)

CITY OF MODESTO, COUNTY OF STANISLAUS, STATE OF CALIFORNIA
SCALE: 1" = 150' January 28, 2016



CITY CLERK'S STATEMENTS

I HEREBY CERTIFY THAT THIS MAP SHOWING THE PROPOSED BOUNDARIES OF CITY OF MODESTO COMMUNITY FACILITIES DISTRICT NO. 2016-2 (THE VINTAGE), CITY OF MODESTO, COUNTY OF STANISLAUS, STATE OF CALIFORNIA, WAS APPROVED BY THE CITY COUNCIL OF THE CITY OF MODESTO AT A REGULAR MEETING THEREOF.

MADE ON THE 28th DAY OF January, 2016.

BY ITS REGISTRATION NO. 2016-21

STEPHANIE LOPEZ, CITY CLERK
BY: Stephanie Lopez
Stephanie Lopez
PLAT NAME

FILED IN THE OFFICE OF THE CITY CLERK OF THE CITY OF MODESTO BY RECORDABLE FORM

ON THE 28th DAY OF January, 2016.

STEPHANIE LOPEZ, CITY CLERK
BY: Stephanie Lopez
Stephanie Lopez
PLAT NAME

DF ENGINEERING, INC.
CIVIL ENGINEERING AND SURVEYING
3421 TULLY ROAD - SUITE J - MODESTO, CA 95360
TELEPHONE (209) 529-7450 - FAX (209) 529-5457

COUNTY RECORDER'S STATEMENT

FILED REC 5th DAY OF February, 2016, AT 11:28:10 P.M. & X

BOOK 5 OF MAPS OF ASSIGNMENT AND COMMUNITY FACILITIES DISTRICTS AT PARCEL(S) 41
IN THE OFFICE OF THE COUNTY RECORDER OF THE COUNTY OF STANISLAUS, STATE OF CALIFORNIA.

LEE LINDSEMAN, COUNTY RECORDER OF THE COUNTY OF STANISLAUS, STATE OF CALIFORNIA

BY: Julie Cano DOC# 2016-0009580-00
Julie Cano
PLAT NAME Deputy